

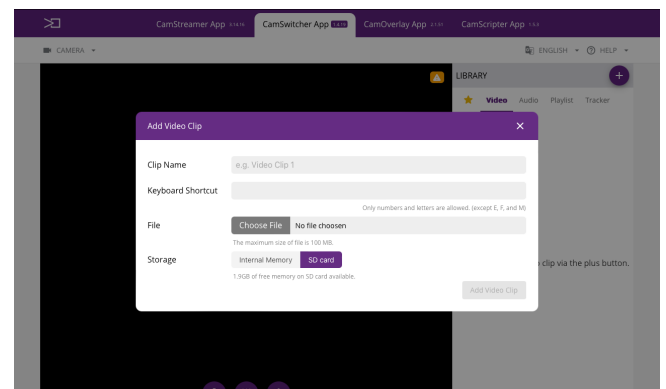
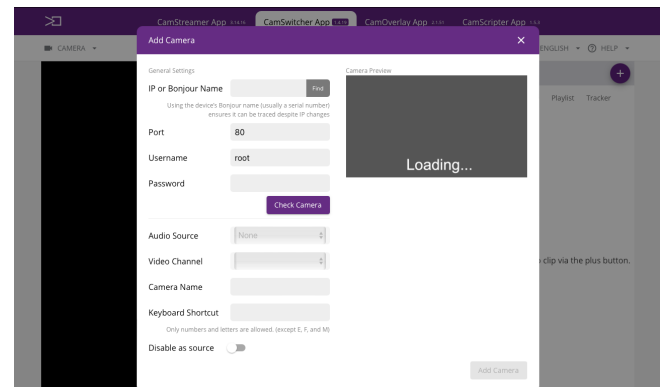
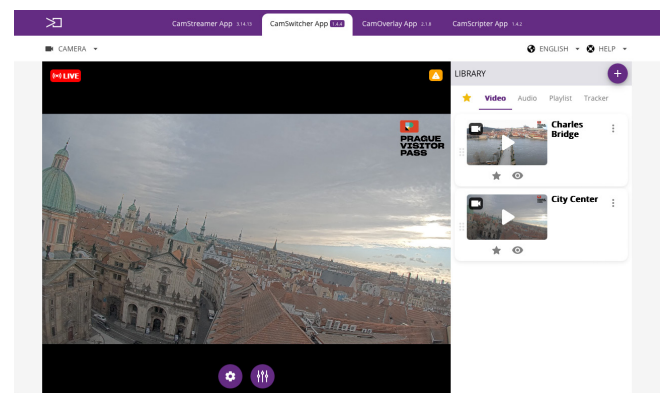
# CamSwitcher App



**CamSwitcher App** is an ACAP application running on your camera. It **can switch among AXIS network cameras and video clips saved on the camera's SD card**. Choose master audio and generate a single output video stream in real time. Switching can be manual, automatic via predefined playlists, or triggered via API commands. CamSwitcher App runs on your IP camera without any extra hardware required. The app fetches RTSP video streams from the connected cameras and switches among them. You can also mix audio and video clips stored on an SD card. The mixed video feed can be easily streamed via the CamStreamer App.

## General

Application type	In-camera ACAP app, uploaded into the camera via web browser (Axis camera interface or API) on local camera IP address
Camera compatibility	All cameras with ARTPEC 6/7/8 chipset, compatibility checker on <a href="https://camstreamer.com/download-app">https://camstreamer.com/download-app</a>
Free trial	30 days
License	One-time payment, or Cloud monthly payment
Licensing	Via user interface (internet needed) or via API
API	Yes, see details on <a href="https://camstreamer.com/api">https://camstreamer.com/api</a>
Live video sources	Support video channels and view areas on all Axis cameras reachable via IP network



## User interface

Language	English, Spanish, Japanese
Access to application	Via the web (on camera IP) or remotely via CamStreamer Cloud and CamStreamer Cloud Mobile App

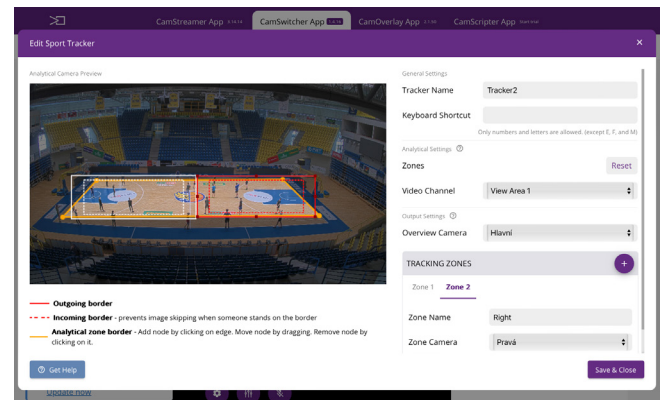
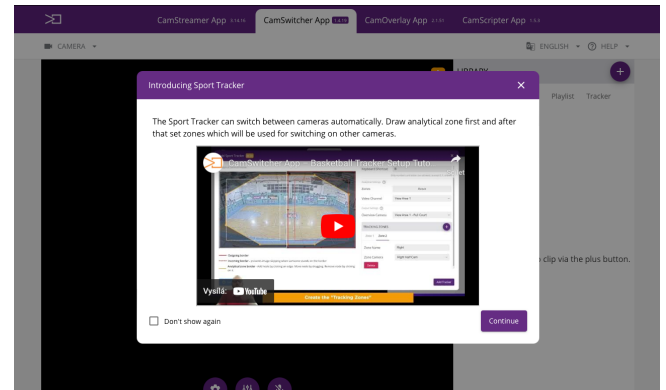
## App functions

Video sources	Up to 5 live video sources, unlimited number of video and audio clips saved on the SD card (clip size is limited to 100MB for each one)
Playlists	Support of playlists with different sources, loop playback, and particular PTZ positions set for each camera video item

# CamSwitcher App



Audio	Each video source can be played with an original or different audio source
Microphone	Support of using a microphone for remote audio commentary of stream mixed with audio from a camera or external microphone in the field
Sports Tracker	Automatic switching between cameras or view areas based on the movement in the selected areas – suitable for automated sports streaming, optimized for a basketball game
Resistance for IP changes	Besides connecting the camera via IP address, it is possible to use a Bonjour name (serial number); hence, the application finds the camera despite changing its IP address



## Mobile app – Control Panel

CamStreamer Mobile App	Available at App Store (iOS) and Google Play (Android)
Control Panel	Control of basic functions of CamSwitcher App via mobile app
Control Panel Features	Switch between cameras/video clips/audio Create playlists

Available only in combination with any CamStreamer Cloud service (Remote Access, Recording or TimeLapse)

<https://camstreamer.com/camswitcher-about>

